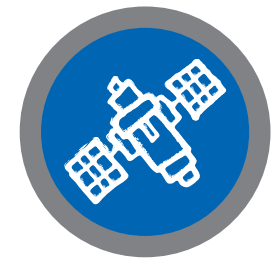


Mission Patch Design



MISSION PATCH
DESIGN

THE CHALLENGE

Mission patches are the visual representation of the goals, ideals, history, hardware and personnel of a particular space mission. The symbols used, the shape of the patch, the colours and background are all selected to represent various aspects of the mission. Patches are worn with pride by astronauts while in space and after a mission is complete, and appear on all mission-related items such as checklists, posters, Internet sites, memorabilia, etc.

Cub Scouts will analyze and describe sample mission patches from the first 11 Canadian missions to space. Teams of Cubs will then create mission patches to visually communicate their team's background and imaginary mission to the International Space Station.

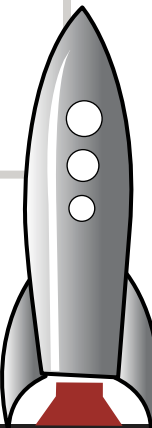
PLAN

- Prepare mission patch samples with corresponding descriptions ahead of time.
- Make copies of the Mission Patch Template.
- Ask Cubs if they have ever seen a logo or mission patch associated with a particular space flight. If so, what did it look like?
- Present the sample patches and their descriptions to Cubs and allow them to discuss what they see on the image and what each patch represents.

DO

Cubs are broken up into mission teams (3-4 Cubs/team).

- Cubs are going to create mission patches for a mission to the International Space Station. Each team must decide on the focus of their mission (i.e. performing science, building or construction, supply delivery etc.). Each group member must agree on why they are travelling into space and what will be the focus of their mission.
- The patch design must convey both their mission goals and something about each member of the team.
- One member of each team will present the group's mission patch to the rest of the group.
- One member of each team will present the group's mission patch to the rest of the group.



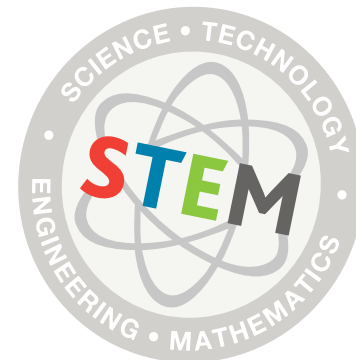
CANADA SCIENCE AND
TECHNOLOGY MUSEUM

STEM Program – Space Exploration Kit



It starts with Scouts.

Mission Patch Design



REVIEW

- As a group, discuss any similarities between patches. Did any common themes emerge?
- What were the major differences between the team mission patches?
- How did individual groups represent their whole team?
- How did they decide who would complete which task during the creation process?

ACTIVITY	TIME
Set up time	5 minutes
Presenting the problem and the material	5 minutes
Discussing Sample Mission Patches	15 minutes
Design a Mission Patch	25 minutes
Review	5 minutes

MATERIALS NEEDED:

Design Your Own Mission Patch

- Mission patch samples
- Large paper
- Felt-tip markers
- Scissors
- Mission Patch templates



CANADA SCIENCE AND
TECHNOLOGY MUSEUM



It starts with Scouts.